



INFORMATION TECHNOLOGY  
DEPARTMENT

IT Systems & Services

# Student's Hand Book



## Become HU Digital Citizen

Get Your Student Card	01
Get To Know Your Digital Identity	01
Personalize Your Digital Identity	02
Connecting To Wi-Fi	02
Bring Your Own Device	03
Unified Communication System	04
Student Portal	05

## Technology Applications

Campus Management System	07
Learning Management System	08
Student Advisement System	09
Syllabus Management System	09
Collaborative Annotation Tool	10
Library Management System	13
Academic Originality System	14
Time Table Management System	14
Meta Curricular Reporting System	15
Graduate Clearance System	15

## HU IT Services

E-Payment (E-pay)	17
E-payment (Habal)	17
Print/Scan/Photocopy Account	18
Print/Scan/Photocopy self-service	19
Data Center	21
Virtual Private Network	22
Audio/Visual Services	23
Information Security	24
IT / IS Policies, Procedures & Guidelines	26
Service Desk System	27

What Would You Like To Do ?

# Become HU DIGITAL Citizen



## Step 01

### Get Your Student Card

Your identification and access control card allow you to shake hands with HU spaces.

Campus access is highly secured and authorization-based. Simply have your finger impression taken, collect your card from security and get going.



## Step 02

### Get To Know Your Digital Identity

Student E-mail

sr01259@st.habib.edu.pk

Student ID

Student Domain

## Step 03

### Personalize Your Digital Identity

IT starts with the temporary credentials shared with you on the first day.

#### Your First Login

- Start by login into **office.com**  
Enter your email address and temporary password provided to you.
- Change your temporary password.
- The screen will be appearing stating “**More Information Required**”, click next to enable the Multi Factor Authentication (MFA) .
- The screen will be showing under authentication system. You will receive the six-digit code on your personal contact number which needs to be enter here.
- After user verification through the code, the screen will show you the success page for setting up the security information. You need to click done after confirming your default sign-in method.
- Lastly, you need to update your temporary password with the new one. Setup your new password and then you're good to go.

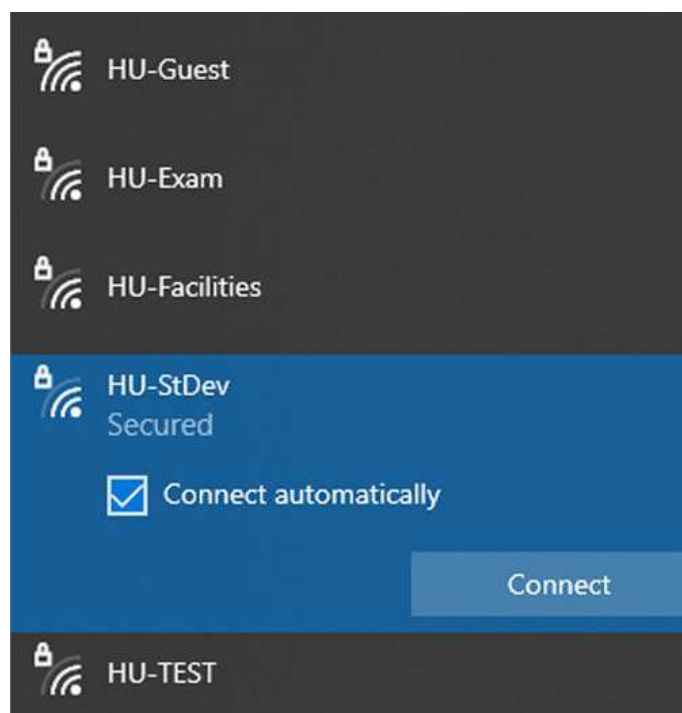
## Step 04

### Connecting to Wi-Fi

The network connectivity works with your HU credentials, your complete Email ID goes in the Username field followed by your password various Wi-Fi networks will be available (at campus), so just locate **HU-StDev** and hop on to the HU Wi-Fi.

#### Domain Password Requirements

- Minimum Length - 10 Characters
- Maximum Length - 24 Characters
- Password must be strong, unique and having unique characters ( Upper case and Lower case characters, Numbers and Special Characters such as : @#\$\* )
- Passwords are case sensitive whereas the user name or login ID is not
- Minimum password age- 1 day
- Account lockout threshold - 5 failed login attempts





## Bring Your Own Device

BYOD

Students can bring and connect digital gadgets for educational purpose using the designated Wi-Fi network.

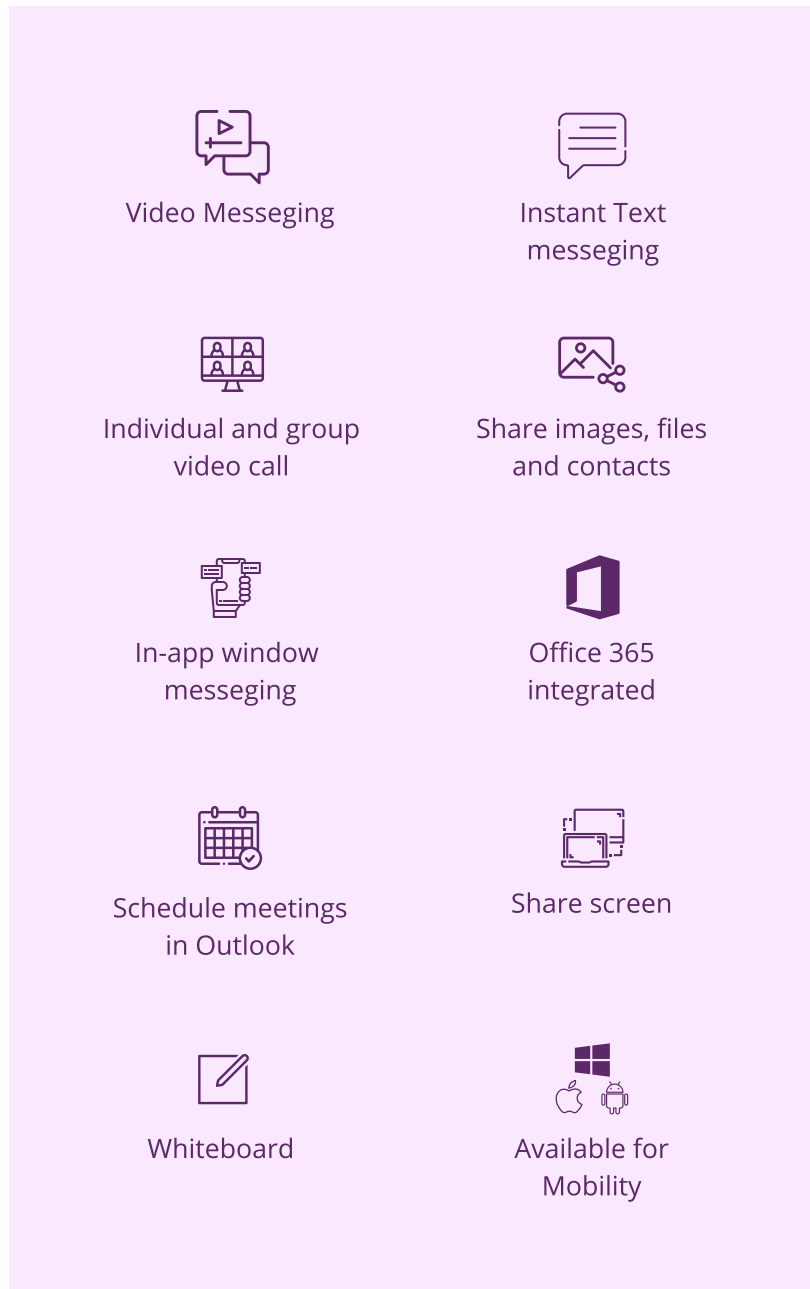


# Unified Communication System

## Enable seamless communication for all

Microsoft Teams is a powerful way to communicate with HU Community. Using a single tool you can open a text chat, make a voice or video call or even start an online meeting.

Access Teams' school version by using your HU credentials



## Microsoft Teams

### Support

[support.microsoft.com/en-us/teams](https://support.microsoft.com/en-us/teams)

### Tutorial

[microsoft.com/en-us/videoplayer](https://microsoft.com/en-us/videoplayer)

### Download for Desktop

 Download teams for Mac OS

 Download teams for Windows

### Scan & download the app



 iOS App

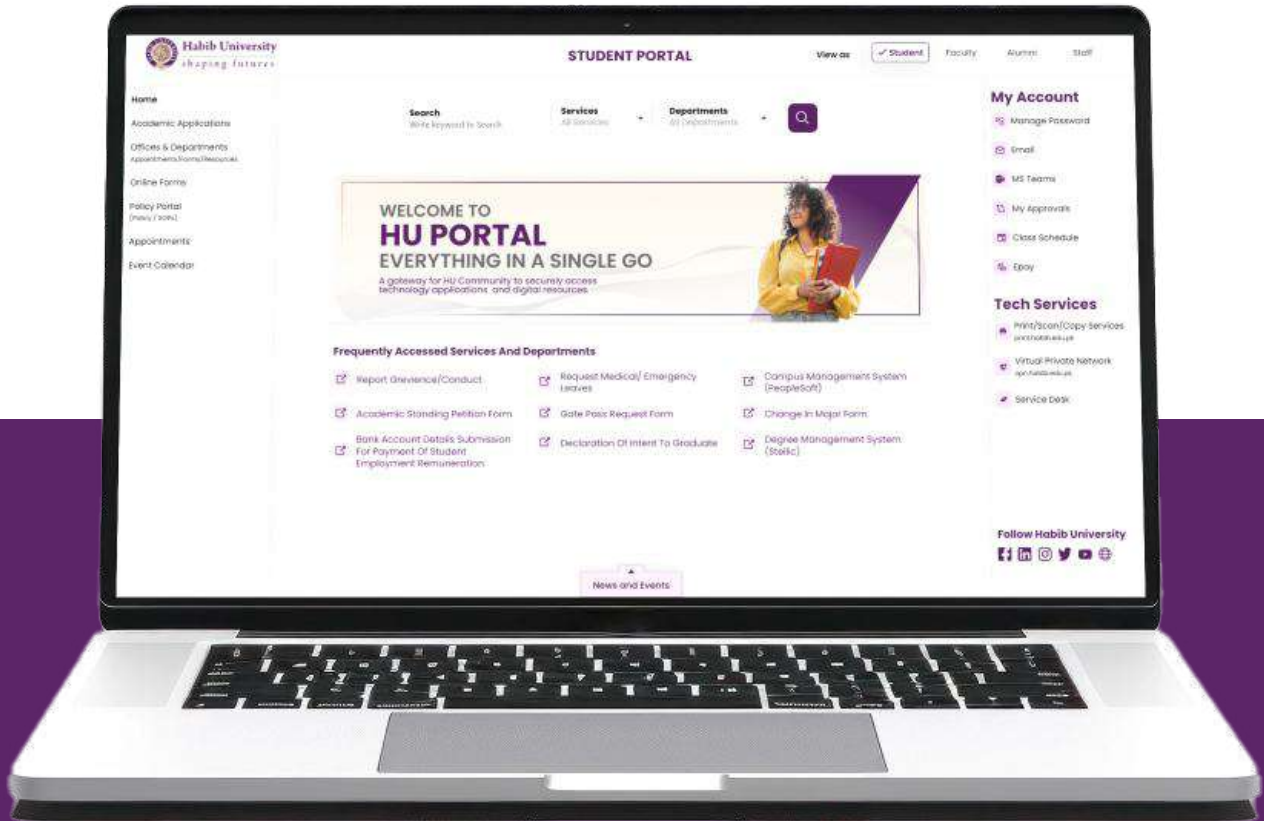


 android app



# Student Portal

🌐 studentportal.habib.edu.pk



## Everything in one place

A gateway for students to access collaborative digital resources for various administrative requirements.

# Technology Applications





# Campus Management System

## Manage Academic Administration Needs

[pscs.habib.edu.pk](https://pscs.habib.edu.pk)

The deepest and broadest sets of functionalities to fully support student life from admission to alumni management.

**01**

Update personal  
Information

**02**

Course Enrollments

**03**

Instructor / Advisor Info

**04**

Class / Exam Schedule

**05**

Finances

**06**

Grades

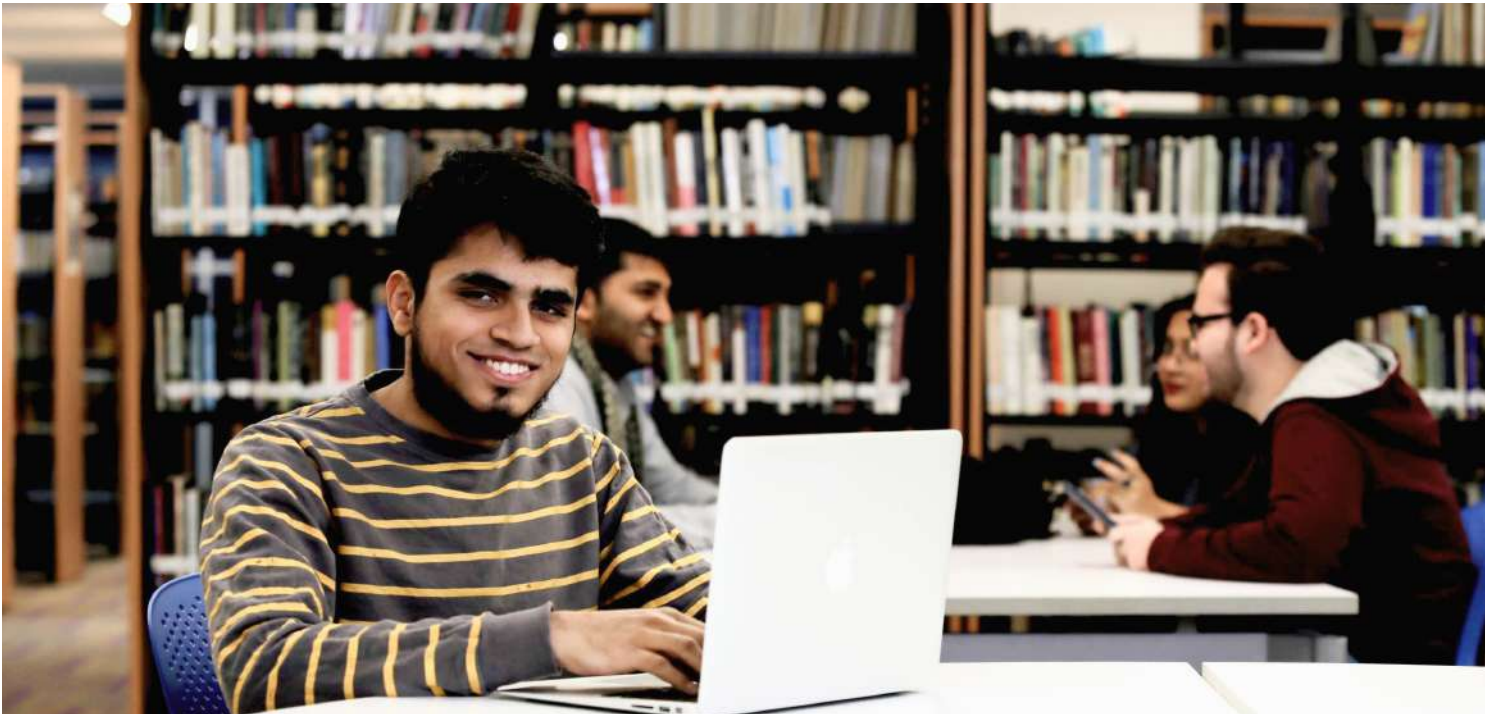
**07**

Graduation  
Requirements

**08**

Transcript

and much more...



# Learning Management System

Tier 1 virtual learning environment

[lms.habib.edu.pk](https://lms.habib.edu.pk)

Canvas is a power house of online learning with course organization, resource management, student guidance and personalized learning.



FAQ site

[community.canvaslms.com](https://community.canvaslms.com)

Tutorials

[community.canvaslms.com](https://community.canvaslms.com)

**Scan & download the app**



 iOS App



 android app

# Stellic...

## Student Advisement System

[advisement.habib.edu.pk](https://advisement.habib.edu.pk)

Next generation advisement tool aligning students, advisors, administrators and leaders for planning, schedule, advisement, audit and reports towards on-time graduation and student success.



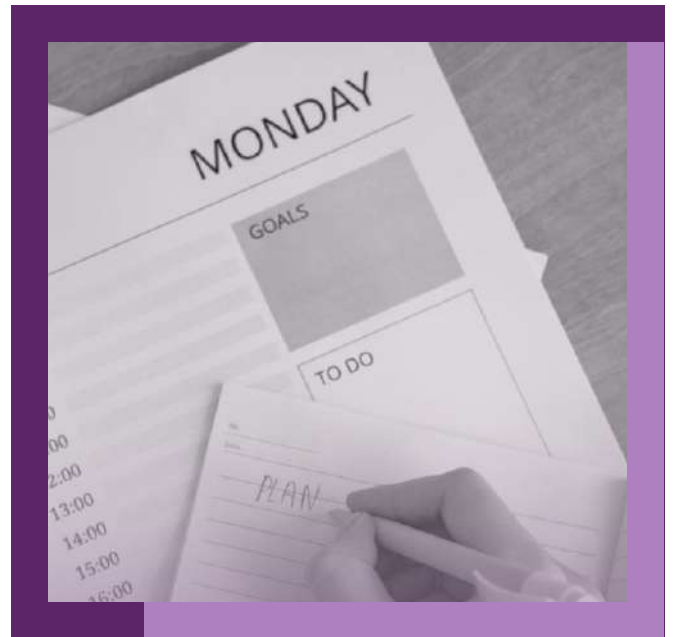
 **SIMPLE SYLLABUS**

## Syllabus Management System

Your Syllabus Anytime Anywhere.

[syllabus.habib.edu.pk](https://syllabus.habib.edu.pk)

A centralized, template-driven platform that enables instructors to quickly personalize and publish interactive class syllabi. A personalized experience for each student with a curated collection of both current and previous course syllabi.





# Libaray Management System



# Library Management System

Enrich Learning

[catalog.habib.edu.pk](http://catalog.habib.edu.pk)

**01**

OPAC / Public Catalog

**02**

Customizable Search

**03**

Circulation

**04**

Patron

**05**

Reports

**06**

Reading List

**07**

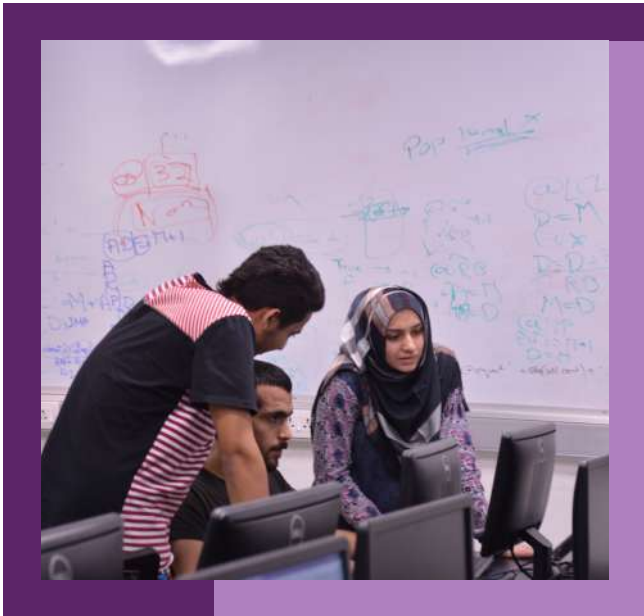
Serials

**08**

Catalogue

and much more...





## Academic Originality System

### Technology to Improve Student's Writing

A Turnitin account specially for faculty to assess student work on their use of source material with the world's largest content comparison database. It highlights the unoriginal content using the world's most effective plagiarism detection system. This is directly linked to the Canvas providing faculty with the option to run the Turnitin software on your specific assignment.



## Time Table Management System

[timetable.habib.edu.pk](http://timetable.habib.edu.pk)

A comprehensive academic scheduling system that supports developing timetables, managing changes to these timetables, sharing rooms with other events, and scheduling students to individual classes.





## Meta-Curricular Activities Reporting System

# Meta-curricular Reporting System

[mct.habib.edu.pk](https://mct.habib.edu.pk)

An online tool for students where they record and submit their Meta-curricular activities during their academic years at Habib University. This system is used to generate Meta-curricular transcript of students while they are graduating.



## Graduate Clearance System

# Graduate Clearance System

to access the system, please visit

[studentportal](#)

This system is designed for graduating students to obtain clearance from departments relevant to their academic tenure at Habib university.



# IT Services



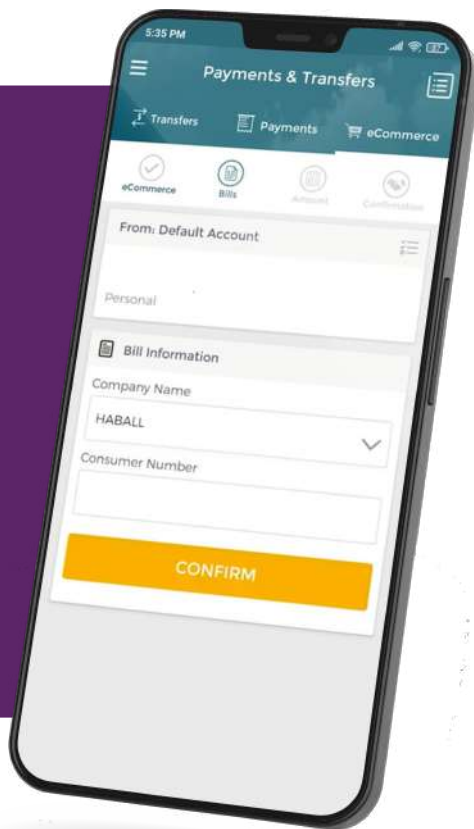
# E-Payment



## E-Pay

[epay.habib.edu.pk](https://epay.habib.edu.pk)

HU students can easily and securely settle any unpaid fee voucher payments online through credit or debit cards. All fee vouchers will be notified them via the student finance office. Please ensure you have the voucher details on hand before entering the E-Pay site



## haball

Habib University also facilitates E-Payment via Haball (a payment gateway).

With Haball students can initiate digital payment of their fee voucher by identifying '**PSID**' at the invoice.

**Scan & watch video for detailed demostration**





# Print / Scan / Photocopy Account

[print.habib.edu.pk](http://print.habib.edu.pk)



## ID Card Registration

- Login into the terminal with your card
- Press on ID card **“Registration”** icon
- Place your ID card on reader
- Terminal will show that your account and your card is registered

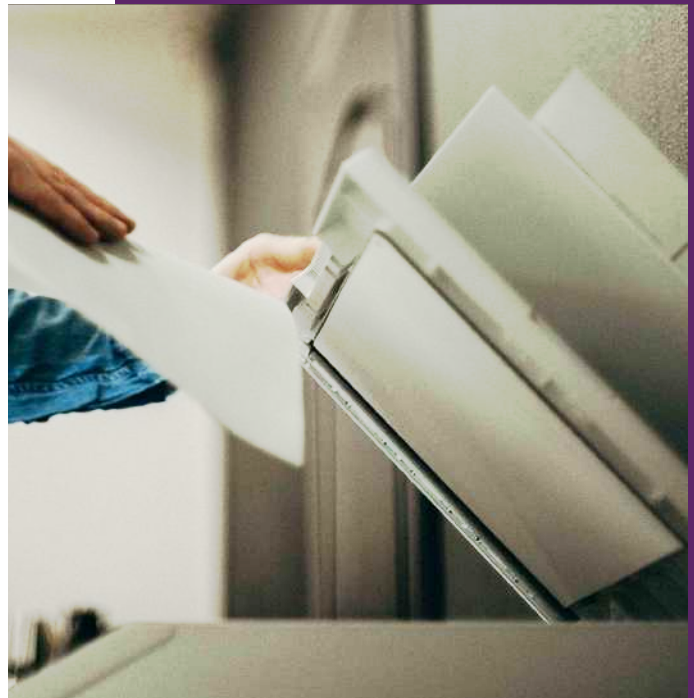
## My Print Account

Access **“print.habib.edu.pk”** for recharge, balance inquiry, track print, history and view report.

Send prints, recharge, balance inquiry, track print history and view reports with print mobile app.

Scan and download the app and use server address as:

**“print.habib.edu.pk”**





# HU Print / Scan / Photocopy Self Service

## Print / Photocopy / Scan Release

- A print / photocopy scan will be releases at the print stations; place your HU ID card on the reader or use your HU credentials on the printer's terminal.
- Press **"Print all"** to release all prints jobs, or press **"My Jobs"** option to select and print specific job(s)
- Cancel jobs by pressing **"My Jobs"** and the select specific Job(s) to be cancelled
- Photocopy will be done by pressing the **"Unlock Panel"** icon.
- Scanning will be done by pressing "Easy Scan-Email icon and the scanned copy will be received on your HU email

## Print Job

- You can send a print command from any computer in the library or lab OR
- You can register your own device (one time activity) through the IT service desk in the library

## Job Roaming

- A printout can be received from any Print Self Service Machines within 24 hours of the job being sent

## Voucher

- A prepaid voucher is available from the HU Dukan or the library
- Use the terminal to enter voucher number and recharge or go to **"print.habib.edu.pk"**





# Data Center



# Data Center

Data Center facility is the nerve center of campus information technology infrastructure. It provides a secure, enterprise-wide, reliable and redundant infrastructure for mission-critical campus systems.

**01**

24/7 Operations

**02**

Secure Data Networks

**03**

Service Monitoring

**04**

Load balancing

**05**

Storage management

**06**

Disaster Recovery

**07**

Hosting Services

**08**

Server Virtualization  
Management

and much more...

# Virtual Private Network

## Secure Access to Systems from Off Campus

[vpn.habib.edu.pk](https://vpn.habib.edu.pk)

VPN\* offers a secure and dedicated connection allowing the HU community to access the campus network using their official credentials while being physically away.

VPN\* site has available system list.

Only campus IP address restricted systems can be accessed.





## Audio / Visual (AV) Services

Cass rooms and lecture halls are well-supported with audio and visual devices which include computers and video projection, sound reinforcement (microphones & amplification), digital audio & video recording, web cam and video conferencing and streaming etc. Moreover, AV consultation and special arrangements are also available as and when required.



# Information Security

IT maintain strict online security standards to protect your account, personal, educational and financial information from unauthorized access. In line with our policy to further enhance security controls, it is requested and recommended that you follow the measures defined below to experience truly secure computing.



Please never share your credential details (password) with anyone through medium.

Practice good password management.



Never leave your devices unattended.

Always be careful on attachments or links in emails. Delete immediately scam or fraudulent email.



Backup your data regularly.

Be careful about what you plug into your computer.



continued...



Watch what you are sharing on social networks.

Offline, be wary of social engineering, where someone may attempt to gain information from you through manipulation.



Be sure to monitor your accounts for any suspicious activity.

Disable your browser from remembering login details.



Protect and update your computer with latest anti-virus software.

Always use the logout option to sign out of applications.



All information security incidents must be immediately report on service desk.



## IT / IS Policies, Procedures and Guidelines

IT contributes to the development, implementation, monitoring and evolution of IT / IS related policies, procedures and guidelines that are fundamental to successful delivery of world-class IT to HU community. IT / IS policy and procedure manual is accessible through the portal. HU community required to adhere to these policies and procedures.

# Service Desk System

The service desk is the central point of contact for students for any queries and issue pertaining to facilities and services provided by the institution. The desk receives, processes and responds to service requests calls during business hours.

## Modes of Contact



[servicedesk@habib.edu.pk](mailto:servicedesk@habib.edu.pk)



+92 21 1110 42242 (HABIB)



[servicedesk.habib.edu.pk](http://servicedesk.habib.edu.pk)

## In-Person Help Desk

HU community can visit the Help Desk on the ground floor of the library or 3rd floor administration office at campus during business hours.

- Accounts creation and password management.
- Student portal (gateway to all IT resources).
- Internet network (Wi-Fi) connectivity support.
- Campus Management System (Student Academic Administration).
- MS Office 365 (Email, OneDrive, etc.).
- Learning Management System (Student Course Management).
- IT & information security advisory.

and much more...



# Information Technology Department

## Director's Message

It is my extreme pride to have you as a part of HU community, IT team is committed for your digital empowerment. Habib University equipped with top-notch technologies and we offer superior user services to full fill your academic and administrative needs.

**Let's make IT simple for you !**

**Your suggestions are welcome !**

**Waqar Naqvi**

Director of Information Technology

✉ [waqar.naqvi@habib.edu.pk](mailto:waqar.naqvi@habib.edu.pk)